

# Waukesha Metro Transit Facts



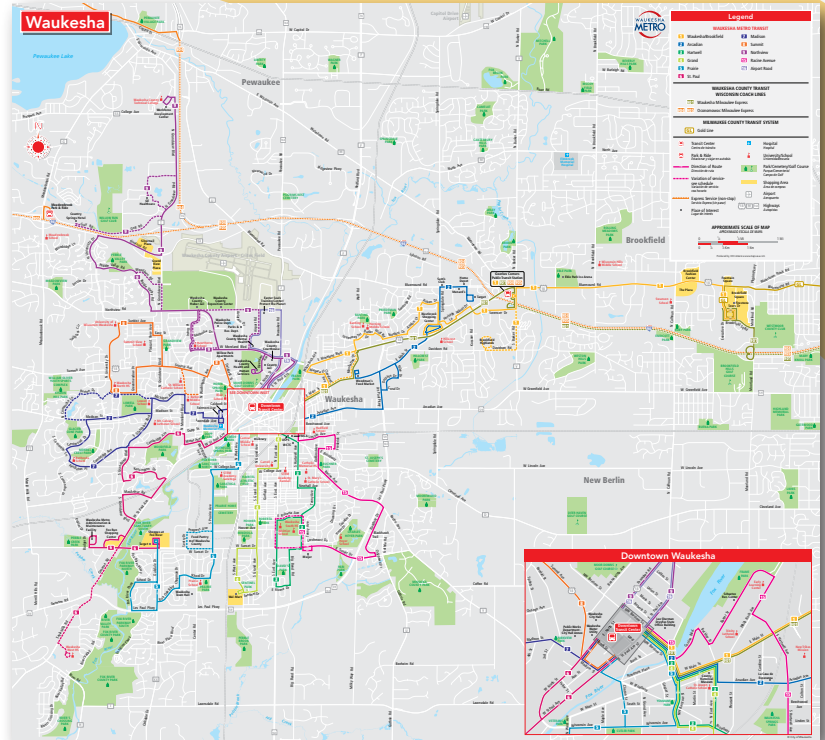
The City of Waukesha Metro buses operate seven days a week, with 11 routes on weekdays, 7 routes on Saturdays and 5 routes on Sundays.

Metro's goal is to provide quality cost-efficient transportation to the Waukesha Community.

Metro is privately managed and its employees work for a private management firm. The Transit Manager, who oversees Metro, is the lone public employee.

## Serving Business

Metro serves many major employers in the Waukesha area. Every year, Metro provides Waukesha area employees with over 404,000 work trips. Almost every new "Big Box" store in the Waukesha area has requested bus service for their employees and customers.



## 2016 Statistics

	Fixed Route	Paratransit
Trips Provided	643,451	10,578
Trips/Revenue Hour	12.32	1.57

**62.8%**  
work trips  
(404,087)

**12.4%**  
school  
trips  
(79,788)

**12.5%**  
shopping  
trips  
(80,431)

**12.3%**  
other trips  
(79,144)

Transit Systems in Wisconsin generate a

**3 to 1** return  
on tax dollar investment



WAUKESHA METRO TRANSIT  
Brian Engelking, Transit Manager  
2311 Badger Drive  
Waukesha, WI 53188  
262.524.3636  
[www.waukeshametro.org](http://www.waukeshametro.org)

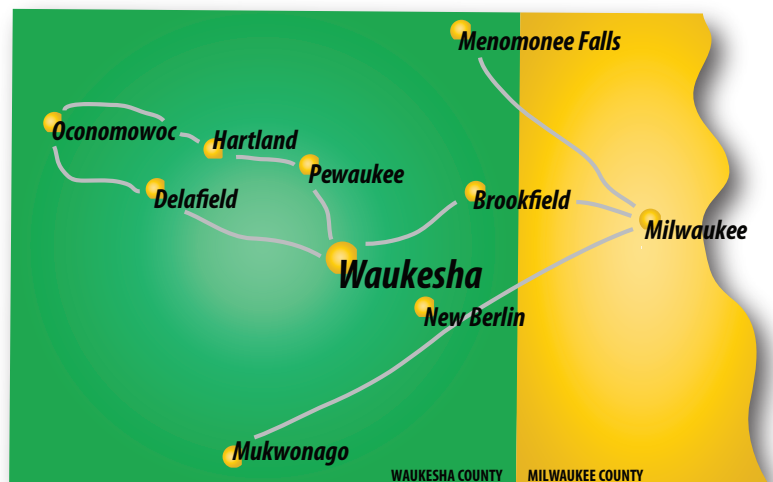
# Waukesha County Transit Facts

Waukesha County Transit consists of 7 routes, 5 of which are commuter routes serving many communities throughout Waukesha County with weekday service to downtown Milwaukee. Some routes also serve the UW-Milwaukee campus. Local service is available along Bluemound Rd. in Brookfield. The system includes paratransit service along the I-94 Corridor. The vast majority of passengers ride Waukesha County Transit to work.

Waukesha County Transit is administered by Waukesha Metro Transit. This allows for greater coordination of services and efficiencies for both systems. Waukesha County Transit contracts out all of its operations.



## Communities Served by Waukesha County Transit



## 2016 Statistics

	Fixed Route	Paratransit
Trips Provided	501,580	3,169
Trips/Revenue Hour	17.62	2.21

Transit Systems in Wisconsin generate a

**3 to 1** return  
on tax dollar investment

